

PEARSON EASYBRIDGE LOG IN for Elementary Students – Mathematics

Pearson EasyBridge – One log in – then it is a portal to Pearson’s SuccessNet platform and products.



Elementary students using Pearson materials for mathematics will log in to Pearson EasyBridge then:

- Use **Pearson SuccessNet**

Step One: Teachers add products to their classes.

Step Two: Staff and students will find SuccessNet in the upper right of the screen when they log in. They will select SuccessNet to access online curriculum

Where do we find the link to get to Pearson EasyBridge? (Screenshots included on next pages)

1. **On district lab or district Windows computers in IE under favorites; in Chrome under Managed Bookmarks, on the EPS Google Apps landing page and on the Grades&More website.**

NOTE: When working within the district, teachers and students are logged in automatically if using a windows computer.

2. **On Chromebooks within the district the URL is found under Managed Bookmarks**

NOTE: Chromebooks and any computers used at home or outside the district network- require a full log in –entering a student ID and network password. This is the same password used to log on to the computer. Links to Pearson EasyBridge are on the Grades&More page.

- At home set-up may require students to add everett\ID# as log in name

See next pages for screenshots.

How to navigate to Pearson EasyBridge Plus: Step by Step

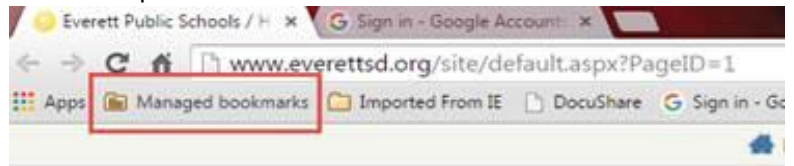
When “at school”- how to get there:

With Chrome- at School

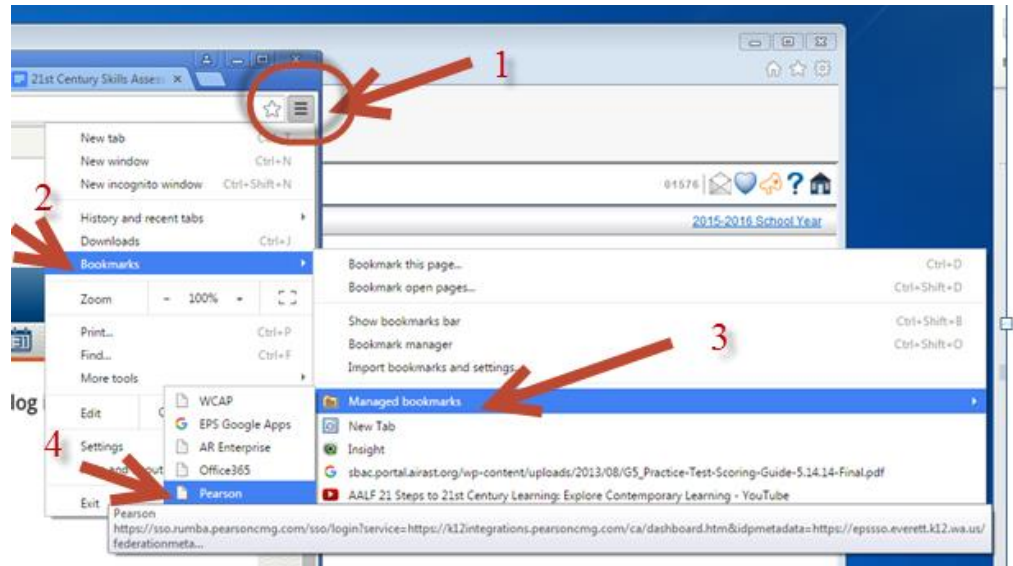
Step #1 – Select Chrome



Step #2 – Select MANAGED BOOKMARKS



Note: If you do not see any favorites bar – navigate to Managed Bookmarks using the three parallel lines in the upper right of your browser window and then follow steps 1, 2, 3, 4



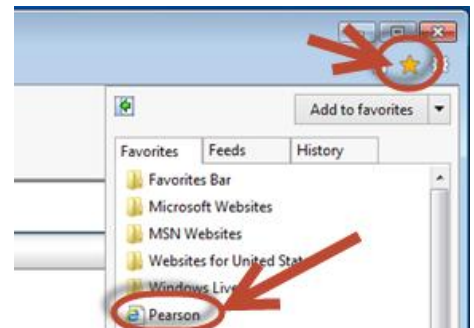
PEARSON will be on the drop down menu.

NOTE: You will need to log in with your ID and network password if you are on a Chromebook.

With Internet Explorer – at school

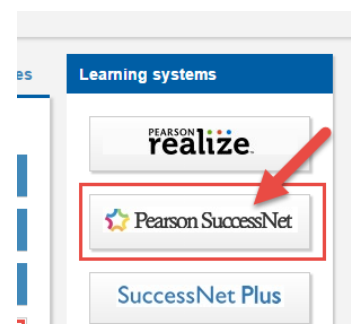
Step #1 – Select Internet Explorer browser

From the browser favorites menu – scroll until you find Pearson



Selecting this link on a windows computer will automatically log you in to Pearson EasyBridge.

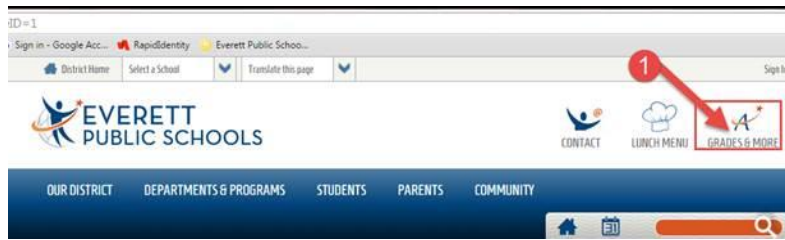
Once you’ve done this, you can select PEARSON SUCCESSNET from the menu on the right to access your class materials.



When “at home”-

Pearson EasyBridge at home access requires a log in.

Select the Grades&More icon on any page of the district or school websites



Scroll until you see Pearson under the Curriculum and Instruction Tools along the right column of the LMS main page

LMS

- Overview
- LMS Professional Development Corner
- Parents
- Students
- Curriculum and Instruction Tools**
- Elementary Staff
- Secondary Staff
- Contact Information
- Office Resources
- Atomic Learning

Welcome to Learning Management Services

Click the icon/picture for the system that best matches your purpose.

Info

All Levels K-12

- [Home Access Center](#)
- District/State Test scores
- Quick view attendance
- Update parent email and phone numbers
- Special Education (IEP)
- View discipline

Elementary grades are only available in print from the schools at the end of each semester

Info

Middle/High School

- [Gradebook](#)
- Assignments
- Attendance Reports (customizable)
- Email Subscriptions (by class and assignments)

Middle and High School parents - sign up for grade reports [emailed automatically](#)

New password process for GUARDIANS ONLY

- [Add security questions](#)
- [Reset your temporary password directions \(password expired\)](#)
- Need a password or log-in? [click here](#)
- Forgot Password? [click here](#)

Change Password for new accounts:

- Log in using temporary password -- [link here](#)
- This is a temporary password, may say your password has expired - click on "CLICK HERE to change your password"*
- Create new password
- Log back in to the same RapidIdentity system to set up challenge questions
- Setting up challenge questions will help you in the future change your password or retrieve a forgotten password

Curriculum and Instruction Tools for staff and students

- [AR/STAR](#)
- [Destiny - Follett](#)
- [Discovery Education](#)
- [DRA](#)
- [Holt](#)
- [Naviance](#)
- [Pearson](#)

Depending on individual computer set up at home – students may need to add to their log in name the following information:

User name: Everett\ID#

- then network password (same password used to log on to a computer at school)

Note: If there is more than one Pearson user per household – you may need to delete cache and browsing history or use a different browser before the next user can log in. Chrome Incognito may also help alleviate this issue. Learn how to [clear cache](#).